



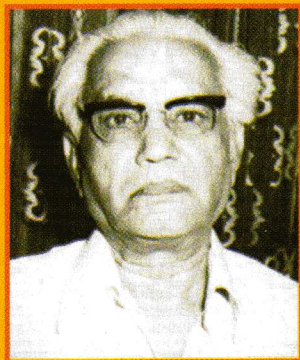
KHOSLA
ENGINEERING
INDUSTRIES

HIGH PERFORMANCE INDUSTRIAL KNIVES



KHOSLA ENGINEERING INDUSTRIES ■ ■

Inspiration



OUR GUIDE

LATE SHRI BALKISHAN KHOSLA

Khosla was founded in 1969 under the leadership of Mr. Chander Khosla. M/s. Khosla Engineering Industries commended its production at Saunsar.

The company was engaged in manufacturing of barbed wire, the company principles M/s. Bhashamernath Balkishan, Bombay who imported industrial knives and cutting blades from Sheffield, England. Seeing the emergence and the need of the time the company started its production in Nagpur unit in 1972. At present the company has the highest market share in industrial knives and paper cutting blades in the country and also have been exporting the same Egypt, Vietnam, Middle East, South Africa and many South Asian countries.

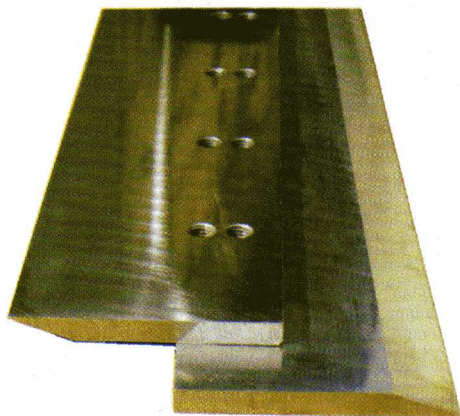
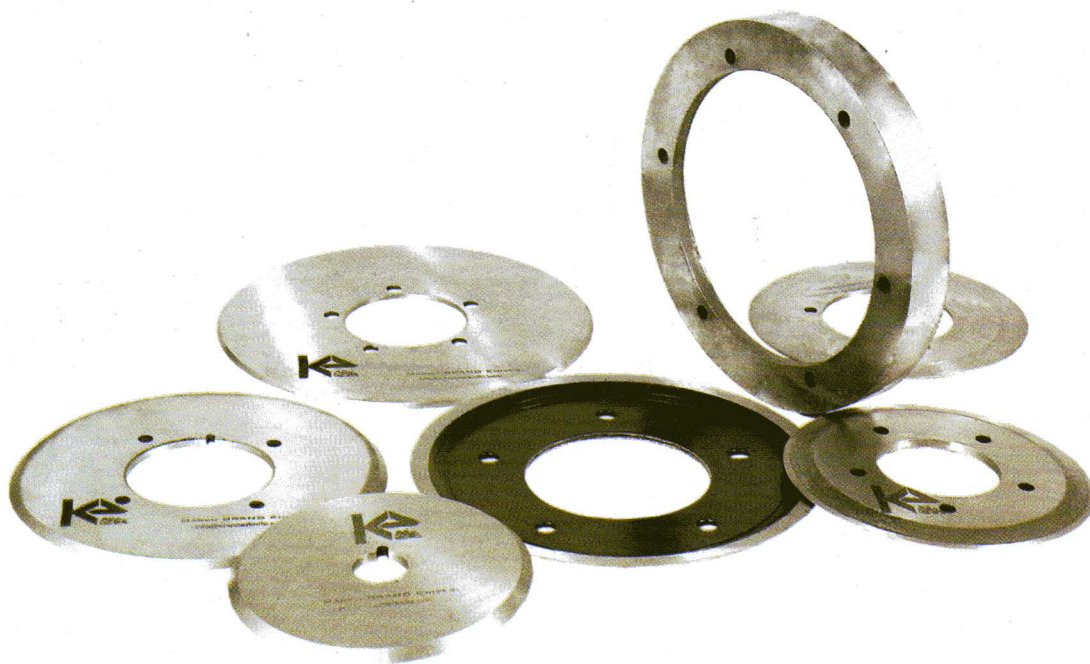


OUR MOTTO

Customer Satisfaction.

The Machine Knives division of Khosla engineering Industries manufactures high performance blades that are usually affixed to machine tools for converting or processing. We guarantee the highest quality blades in terms of sharpness, durability and close tolerances.

- Quality
- Value
- Customer Satisfaction
- After Sales Service



OUR PRODUCTS

Khosla Engineering Industries offers a comprehensive range of precision ground blades, made from the highest quality raw materials. Our maximum size ranges up to 36" in O.D. as well as 204" in length. All blades are made to the most exacting OEM standards; this enables our customers to obtain the best possible results for their cutting requirements.

Our staff includes dedicated Engineers, to help provide cutting solutions for your specific needs. We offer VALUE ADDED SERVICES, our goal is to help you lower your overall production cost by suggesting changes in knife materials and edge geometries.

Our facility includes "state-of-the-art" in-house heat-treating and cryogenics capability, which allows us to further enhance the durability of our knives.



WOOD WORKING KNIVES

Suitable even for hard tropical woods & knotty coniferous woods. Good results even with woods with high resins, knots and pencil logs. Combination of Iron & special cladded steel for greater economy. Dimensionally stable yet flexible. Improved veneer quality & size. Longer life between regrinds and higher number of regrinds per knife. Uniform edge wear. Peeling & splint chopping knives for soft wood grade for match stick & allied industries. Large varieties of profiles for Moulding, Furniture Industry etc. suitable for laminates, particleboards, block boards etc



Plastic Cutting Knives

Cutting & Sealing Blade, Perforation Knives, Packaging Blade. Blade for all types of material, Polythene, Polyurethane, BOPP, Single Layer, Multiple Layer, Aluminum Foil etc.

Blade for flexible packing, pouch making, perforation.

Suitable grade alloy steel with suitable heat treatment.

Perfectly flat and sharp edges.

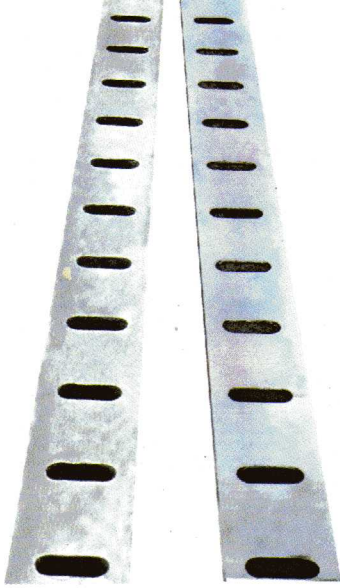


CHIPPER KNIVES

MARSH BRAND CHIPPER KNIVES are extremely resistant to wear and have long life-times, which make them more economical and more productive than other makes.

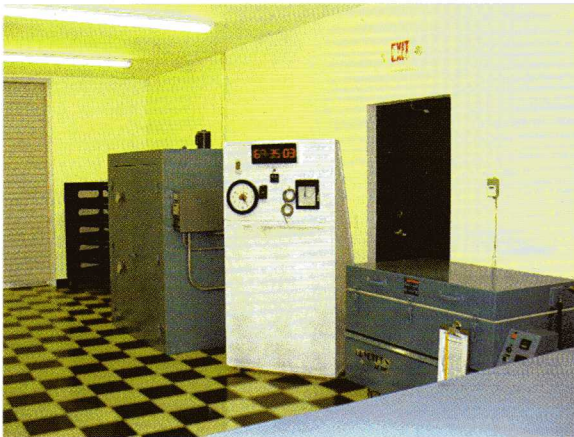
Our each and every MARSH BRAND CHIPPER KNIVES passes through our stringent quality control ensuring superior quality of raw material, accuracy in sizing, perfection in heat treatment and superior grinding finish to give a better cutting edge life and less down time in replacement of knives.

In our most modernised heat treatment plant we heat treat knives within an accuracy of 1 HRC.



SHEET CUTTER KNIVES

Sheet Cutter are manufactured from .5 Mtrs to 2.5 Mtrs keeping in mind the application hardness is maintained from 60 – 62 Hrc ± 1 , product is manufactured with close tolerances.



CRYOGENIC TREATMENT

Khosla Engineering Industries is pleased to announce the availability of DEEP CRYOGENIC treatment of knives, blades, and other industrial tools, in our "in house" microprocessor controlled, cryogenic chamber.

DEEP CRYOGENIC processing is different from conventional cryogenic processing and requires cooling the parts to more than 300° below zero compared to about 120° for conventional cryogenic processing. DEEP CRYOGENIC processing is a microprocessor controlled dry process, which includes cooling the parts at a programmed rate. Soaking the parts for up to thirty-six hours, and then an additional tempering operation to relieve any stress that may remain.



AFTER SALES SERVICE

We recognize that these services are as important to our customers as our finished products and we work hard to offer quick and efficient attention to these needs. Being a major knife producer, many of our customers come back to us for RESHARPENING their knives.

Also as a manufacturer we use many services ourselves and have thus formed companies to also provide these services to other companies. We are also fortunate to be located in one of the largest industrial areas in the INDIA and thus have many customers who have asked us to enlarge the venue we can offer them. We offer HEAT-TREATING, CONTRACT GRINDING & MACHINING.



ISO 9001:2000
Certified Company



KHOSLA ENGINEERING INDUSTRIES

A/8, MIDC , Hingna Road, Nagpur 440 028, MH., India

Ph :- +91-7104-237062 Fax:- +91-7104-232550

Email:- info@chipperknife.com

www.chipperknife.com